

Instruction guide for using the metex[®] pre-filled syringe

- ▶ This guide does not replace the patient information leaflet. Please read the patient information leaflet carefully before starting your injection.
- ▶ Please remember that the metex[®] pre-filled syringe is administered only once per week.

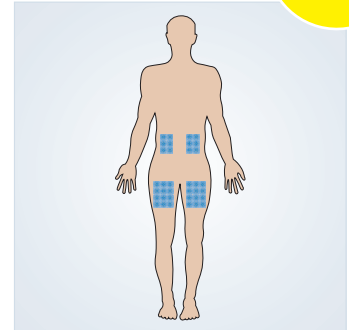
Preparing your injection

- Wash your hands before doing the injection
- Ensure that the skin area you are going to inject has been cleaned with soap and water or with disinfectant

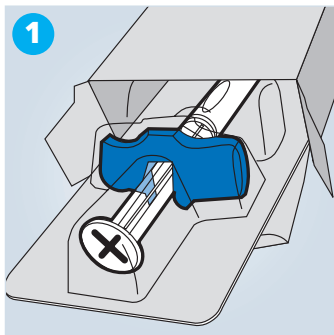
The most suitable injection sites are:

- the abdomen, at least 5 cm away from the naval
- the upper thigh

1 x per week

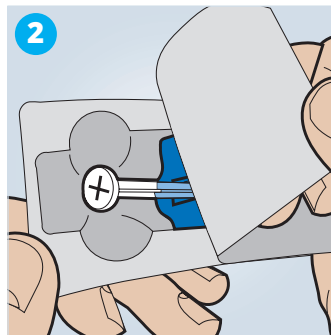


Injecting your dose



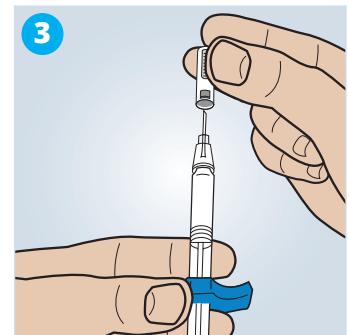
1 Open the syringe and you are ready to go!

Open the carton containing the pre-filled syringe and read the Package Leaflet carefully. Loosen the packaging foil at one corner of the packaging and remove the foil slowly from the packaging.



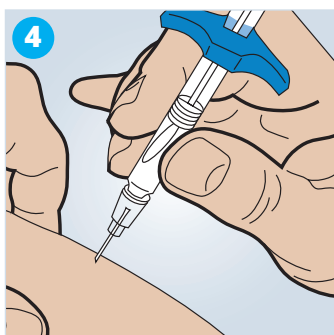
2 Unpack the pre-filled syringe

Hold the packaging straight so that the pre-filled syringe does not fall out. Remove the pre-filled syringe from the packaging at room temperature.



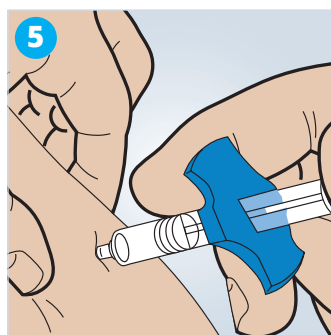
3 Remove the protective plastic cap

Carefully remove the grey protective plastic cap by pulling it straight off the syringe. If the cap is very stiff, turn it slightly with a pulling movement. Important: please do not touch the needle of the pre-filled syringe!



4 Inserting the cannula

Using two fingers, pinch up a fold of skin and insert the needle vertically to the skin surface with a quick, short motion.



5 Injection

Insert the needle fully into the fold of skin. Push the plunger down slowly and inject the liquid underneath your skin. Please do not let go of the fold of skin until the injection is completed. Then carefully pull the needle straight out.



6 Disposal

Dispose of the syringe in accordance with the local requirements.

Further information and a detailed injection video can be found at [medoject.com](https://www.medoject.com)

